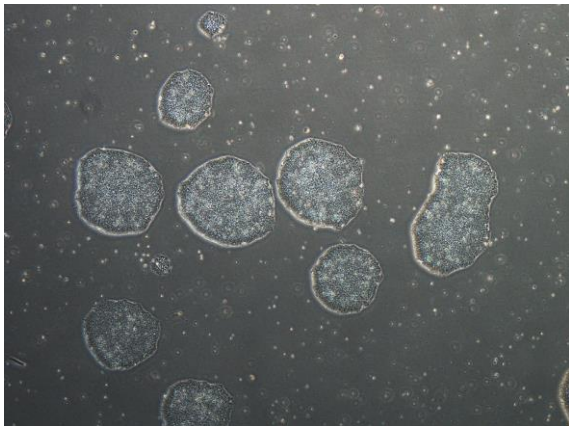
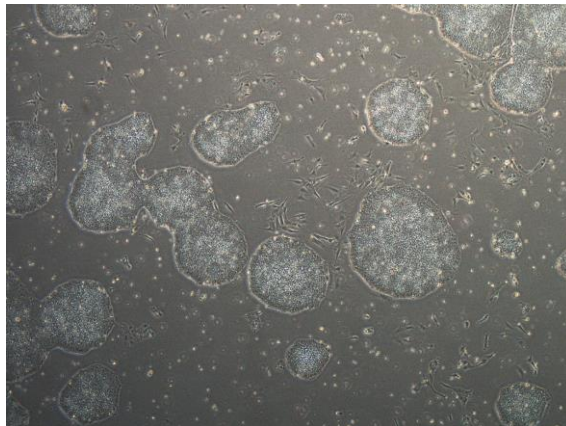


【 CiRA-j-1224 】 Morphology of iPSC colonies

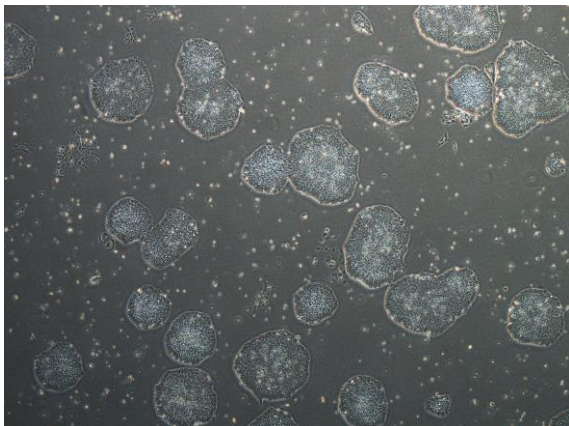
CiRA-j-1224-A: passage-3



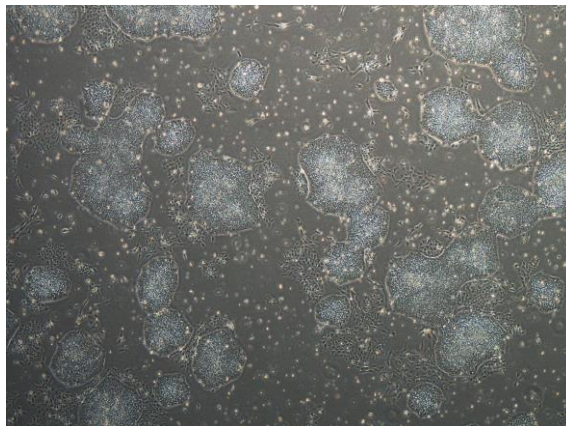
CiRA-j-1224-B: passage-3



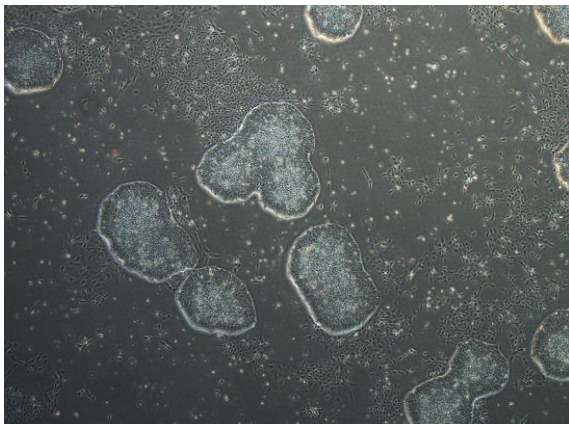
CiRA-j-1224-C: passage-3



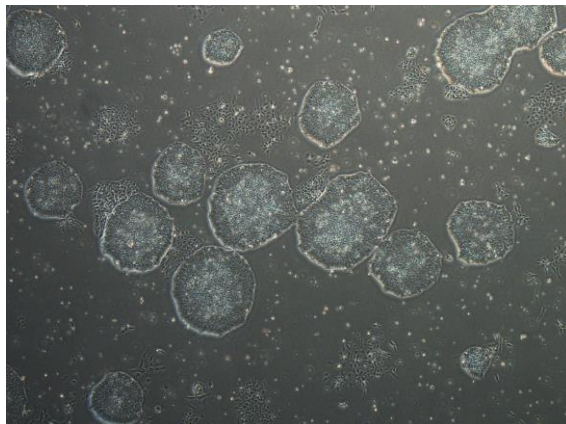
CiRA-j-1224-D: passage-3



CiRA-j-1224-E: passage-3



CiRA-j-1224-F: passage-3



(All images were captured at 4x magnification)